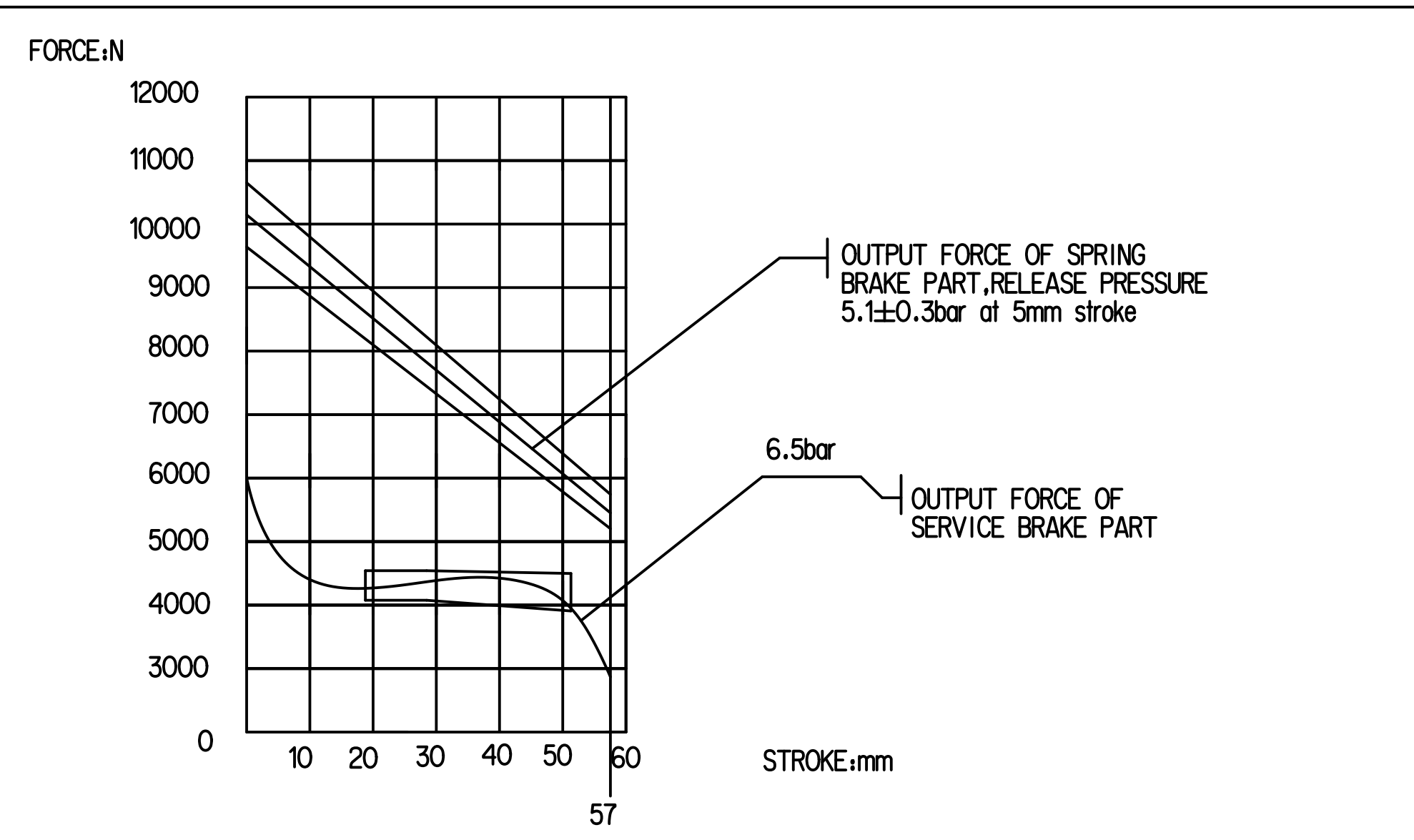
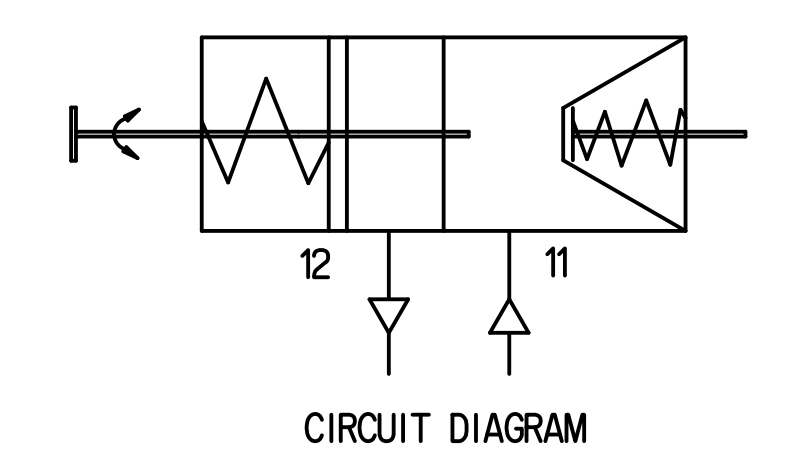
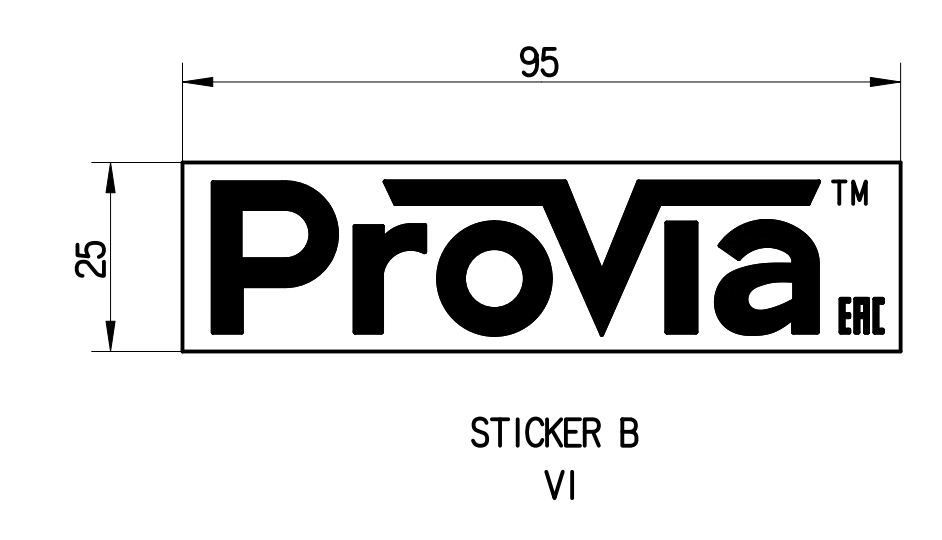
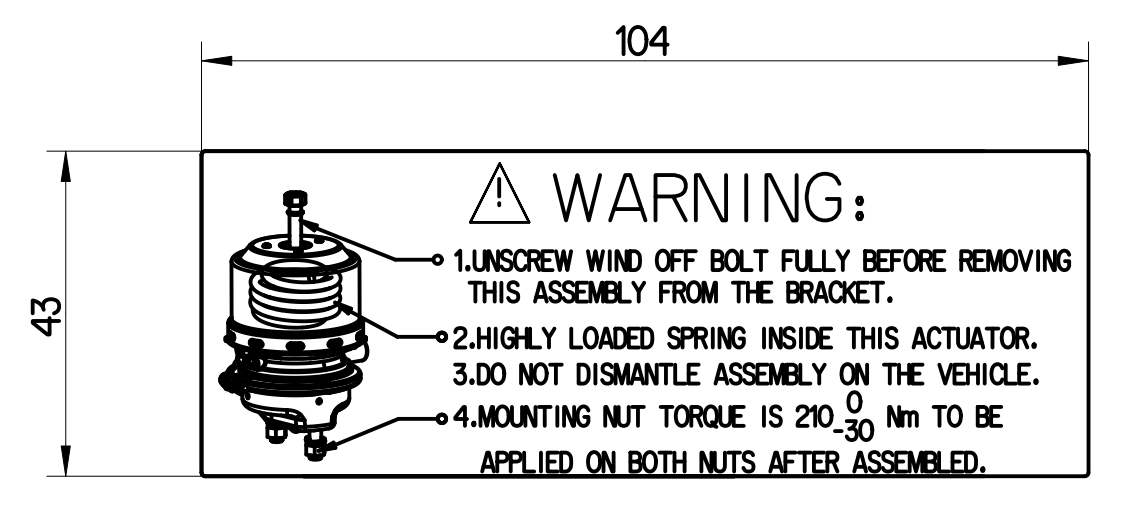
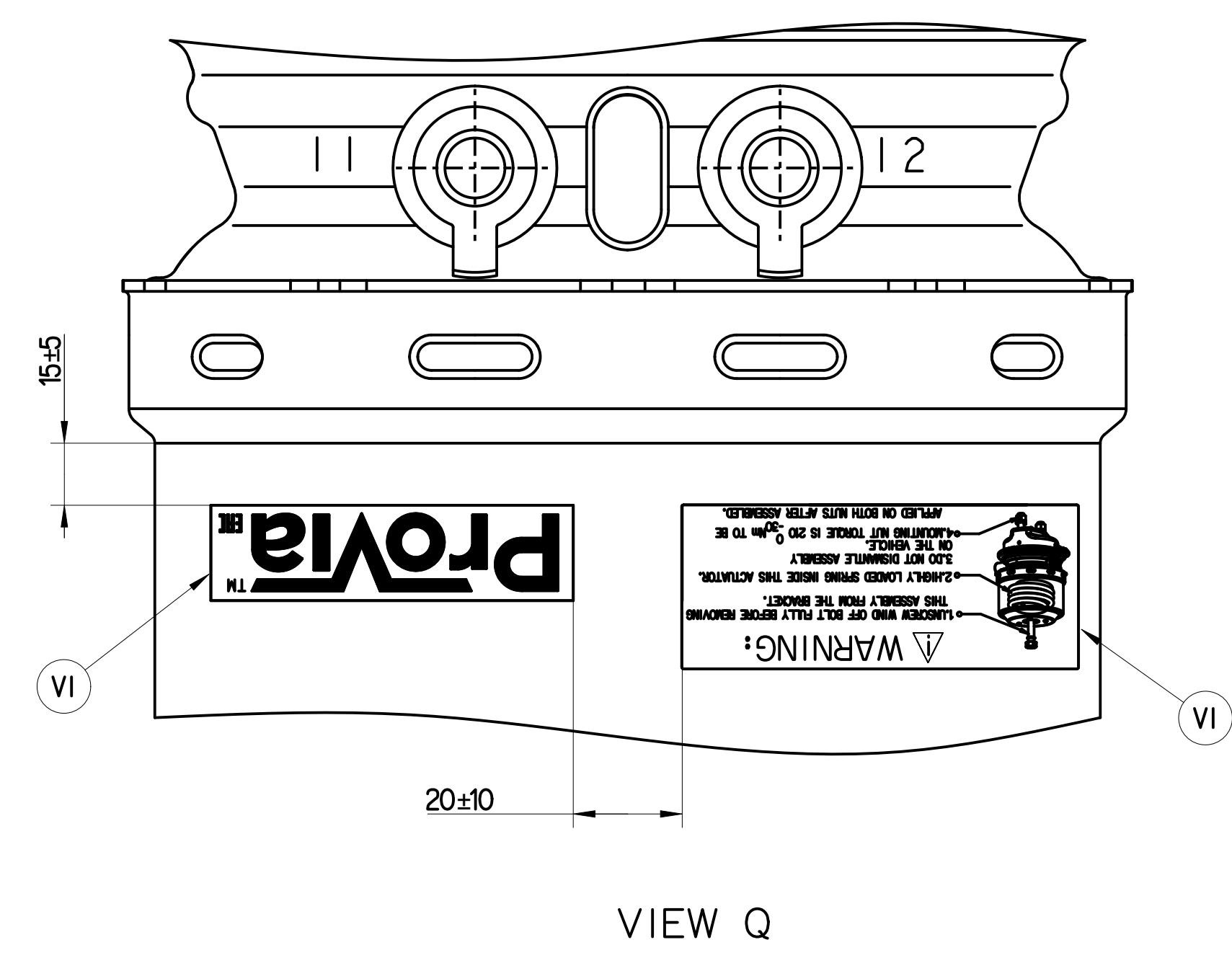
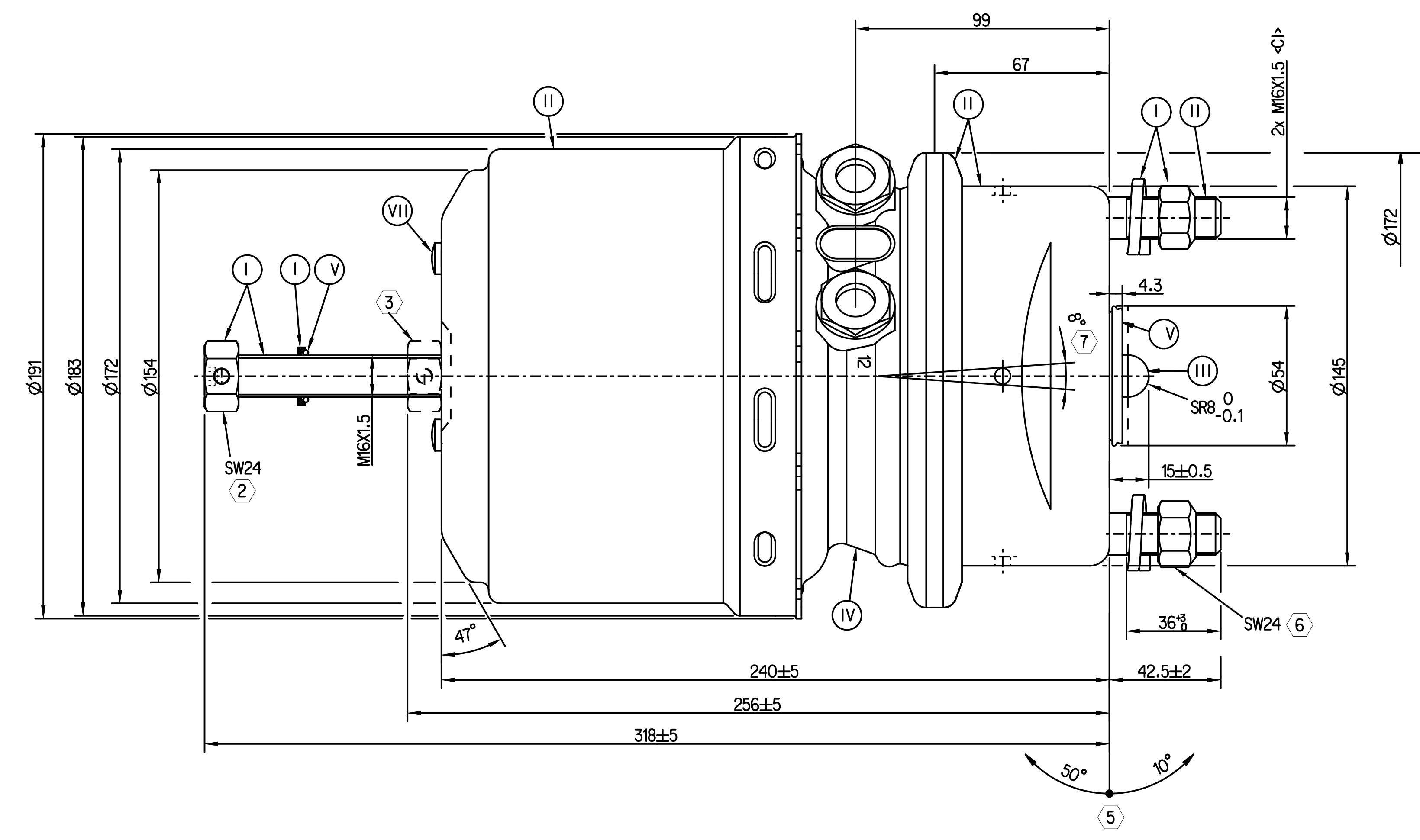
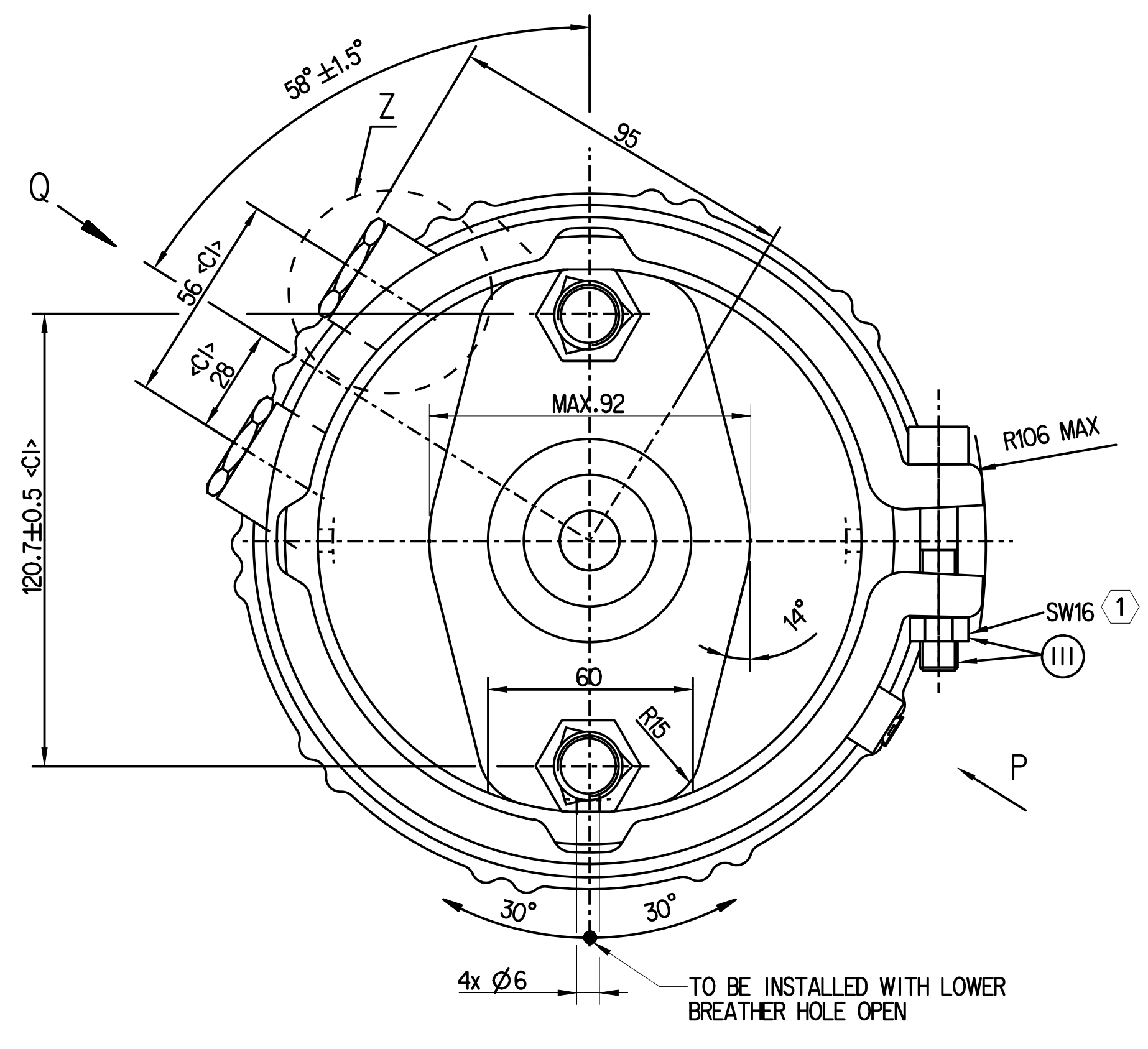
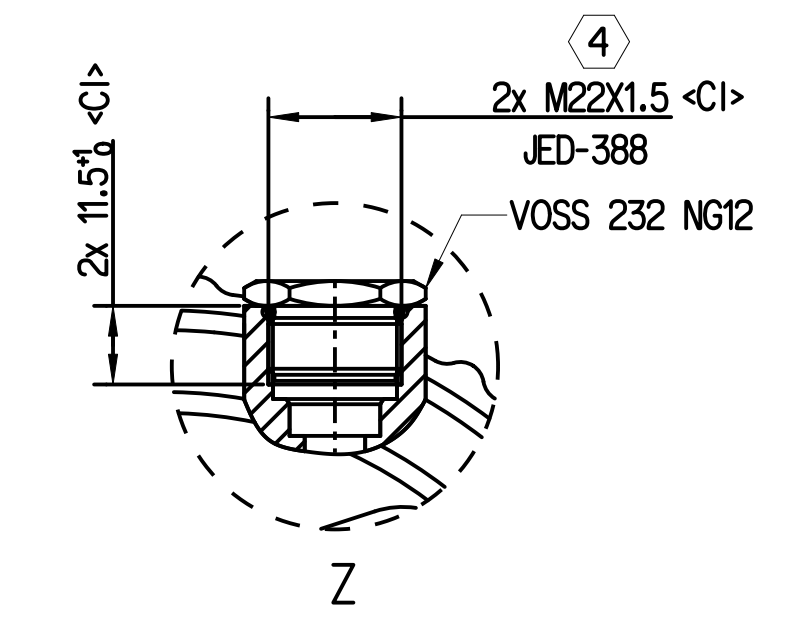
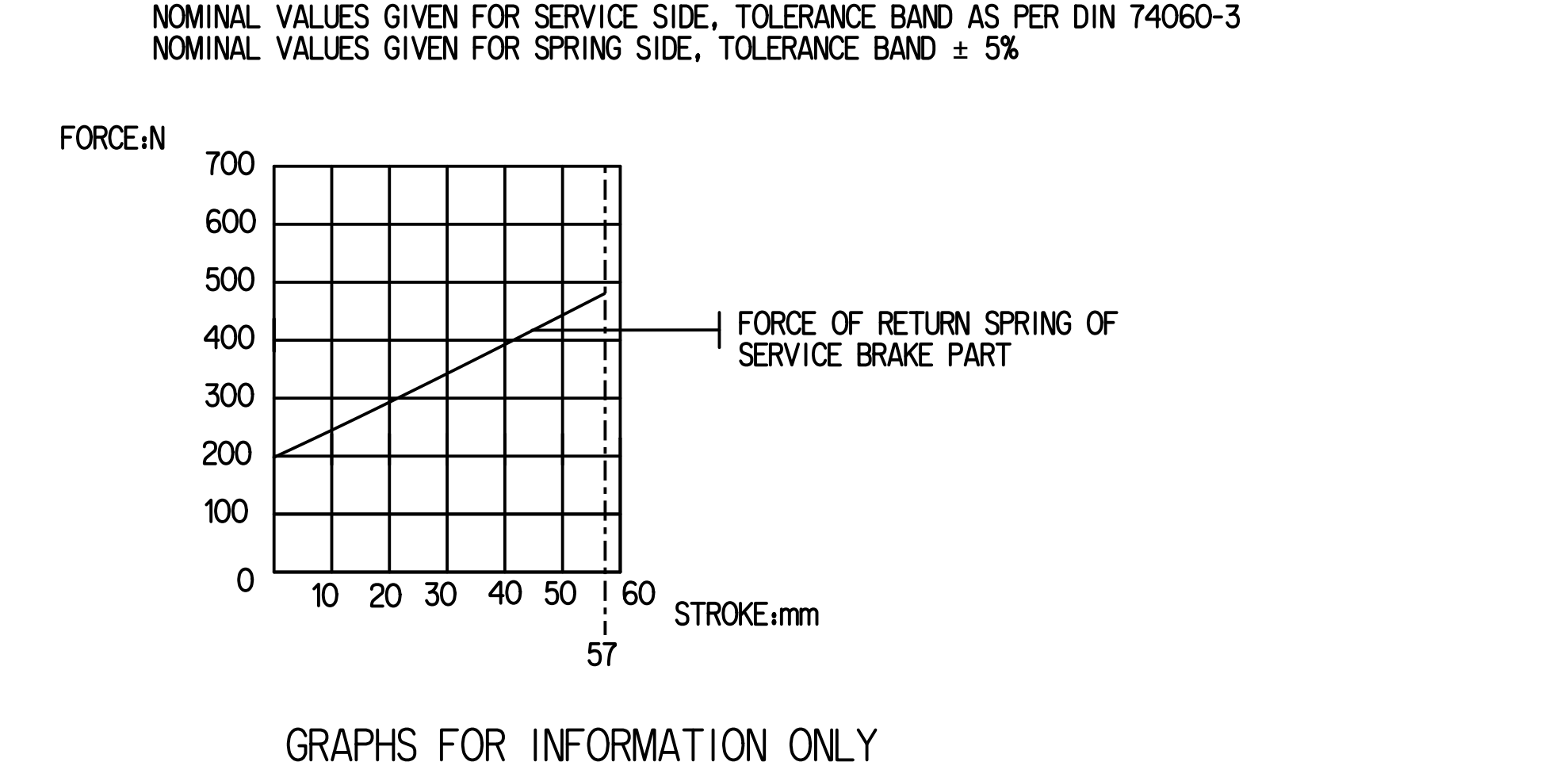


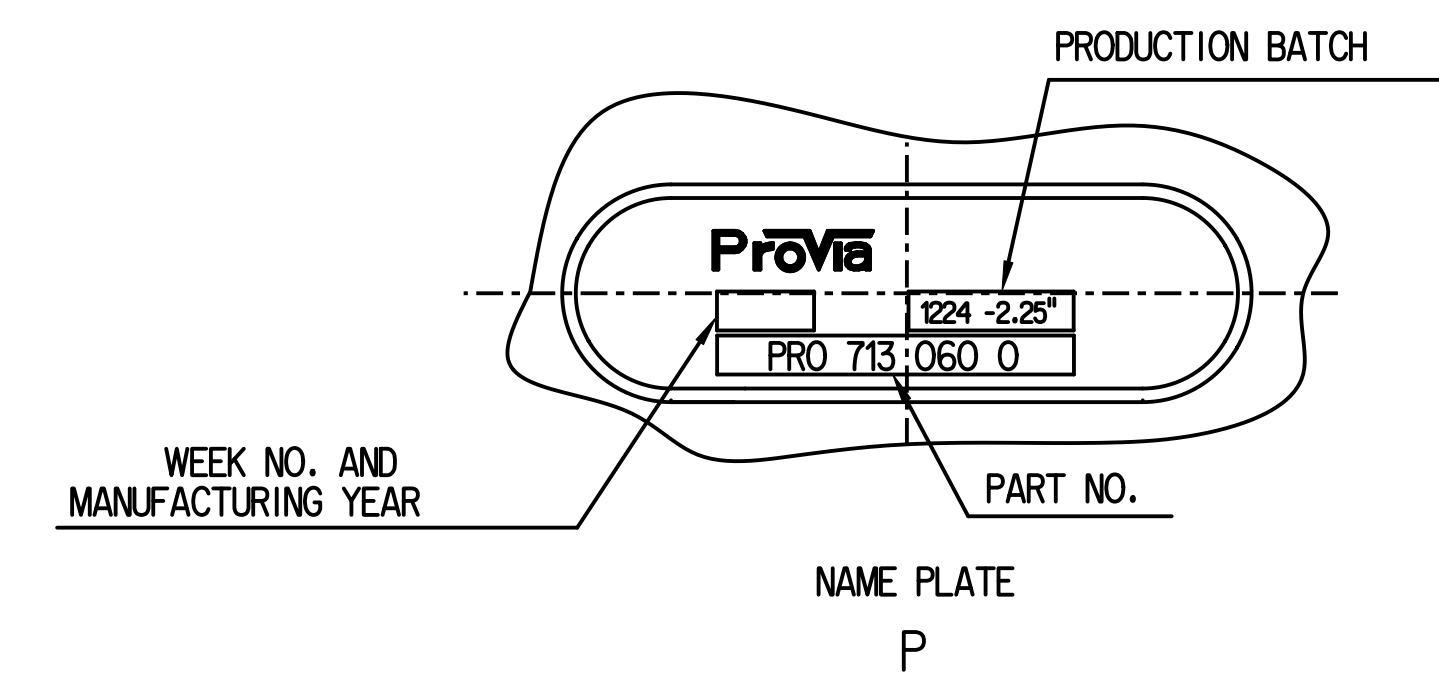
SURFACE PROTECTION	
I	ZINC PLATED WITH CR6+ FREE
II	ELECTRO-PAINTING
III	DACROMET
IV	SURFACE OXIDIZATION
V	RUBBER
VI	STICKERS
VII	BLACKENING



- (1) TORQUE:  $\geq 35$  Nm
- (2) RELEASE POSITION, RELEASING WITH: 80 Nm MAX.
- (3) DRIVING POSITION, TIGHTENING WITH:  $25 \pm 20$  Nm
- (4) PORT: NG12 VOSS 232 SYSTEM; TORQUE: MAX. 53 Nm
- (5) ADMISSIBLE INSTALLATION POSITION
- (6) TORQUE:  $210 \pm 30$  Nm
- (7) DEFLECTION: 8° MAX AT STROKE: 0 mm



- TECHNICAL REQUIREMENT:
- STROKE:  
 SERVICE BRAKE:  $\geq 57$  mm  
 SPRING BRAKE:  $\geq 57$  mm;
  - WORKING PRESSURE:  
 SERVICE CHAMBER: Pmax 10.2 BAR, TEMPORARILY 13 Bar;  
 PARKING CHAMBER: Pmax 8.5 BAR, TEMPORARILY 11 Bar.
  - WORKING TEMPERATURE: -40°C...+80°C;
  - THE DRAWING IS AT CAGED CONDITION, THE PARKING CHAMBER WILL BE AT UNCAGED CONDITION DURING SHIPMENT;
  - WORKING MEDIUM: AIR.



General Specification: ISO 8706, JED-354-1, Size ISO 14000 LP		Copyright ©		ProVia	
Further Technical Data: PRO 713.060.0		Date: 2024-07-30		TRISTOP - BRAKE ACTUATOR	
Doc. Code: 035		Sheet: 1 To 6		Rev: 005 EN 1/1	
General Tolerances: JED-261		2024-07-30		Kovya	
Range of Nominal Dimensions ( ± mm)		2024-07-30		Vargalish	
Class	1	2	3	4	5
± 50	± 180	± 400	± 400	± 400	± 400
Medium	X	±1	±2	±3	±4
Course	±2	±3.5	±5	±6.5	±8
Tapped holes acc. JED-388		1)		Tolerance class: Approx. Chromomach	
A 0	CREO	517251	lx	B	5400_AJM