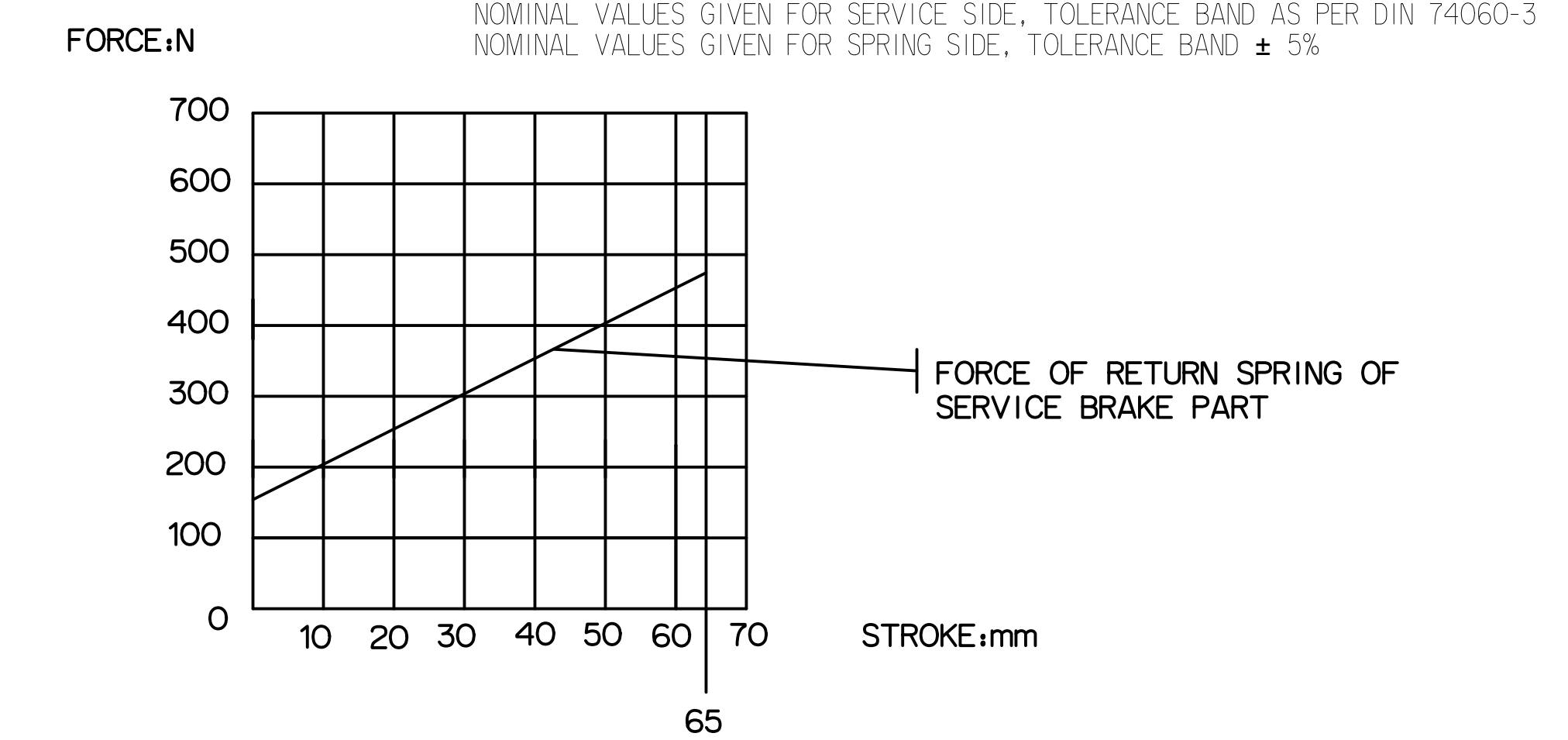
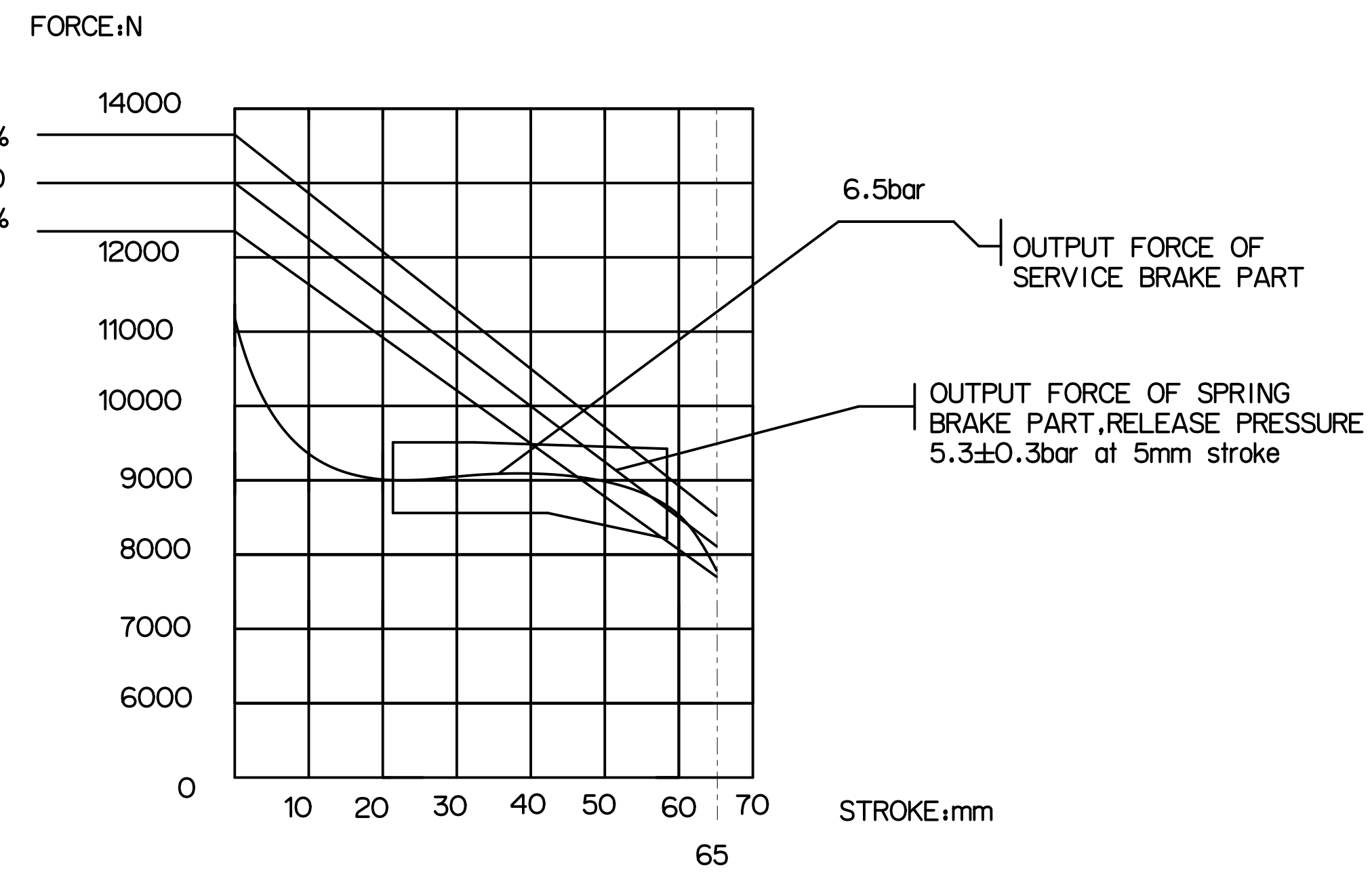
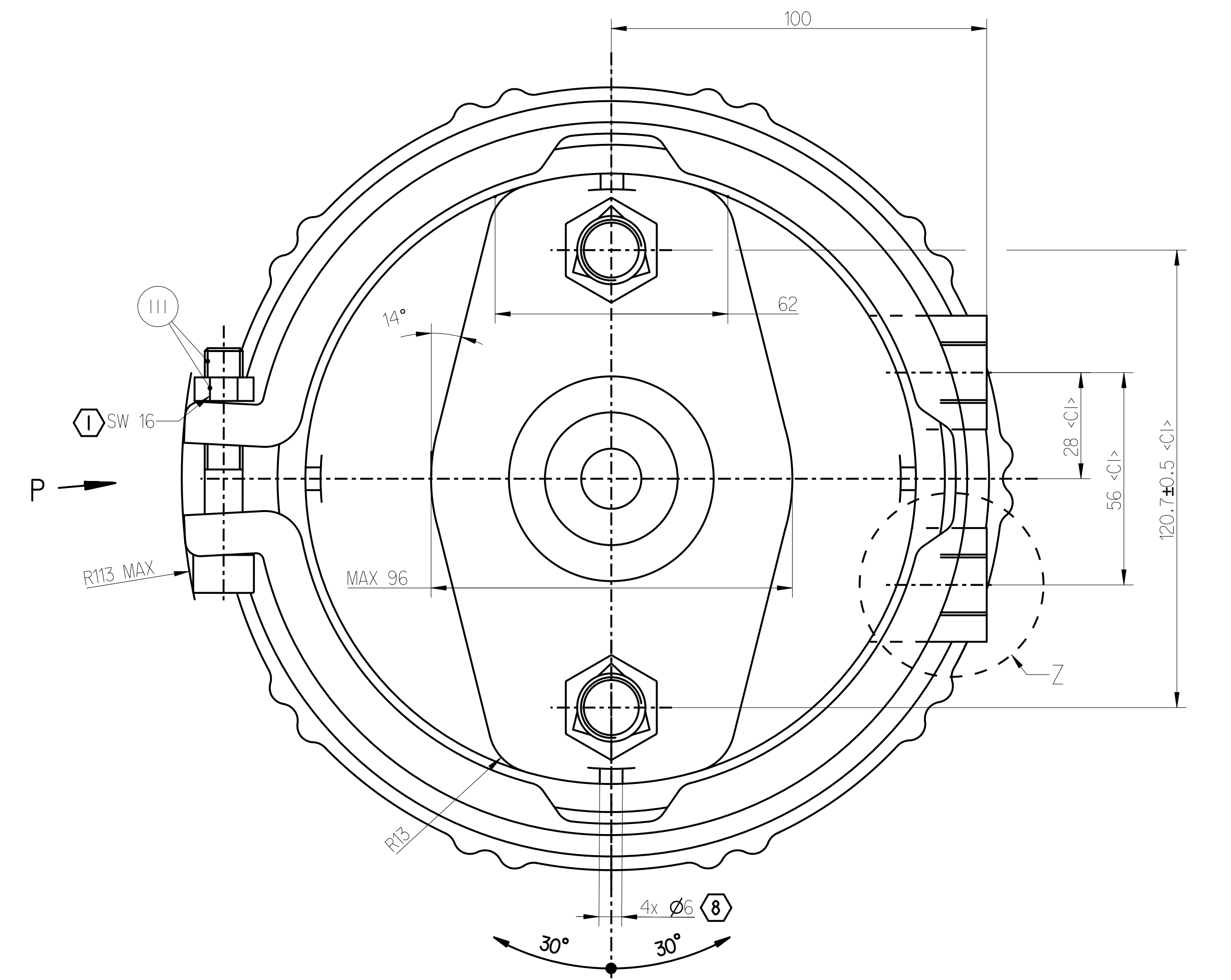
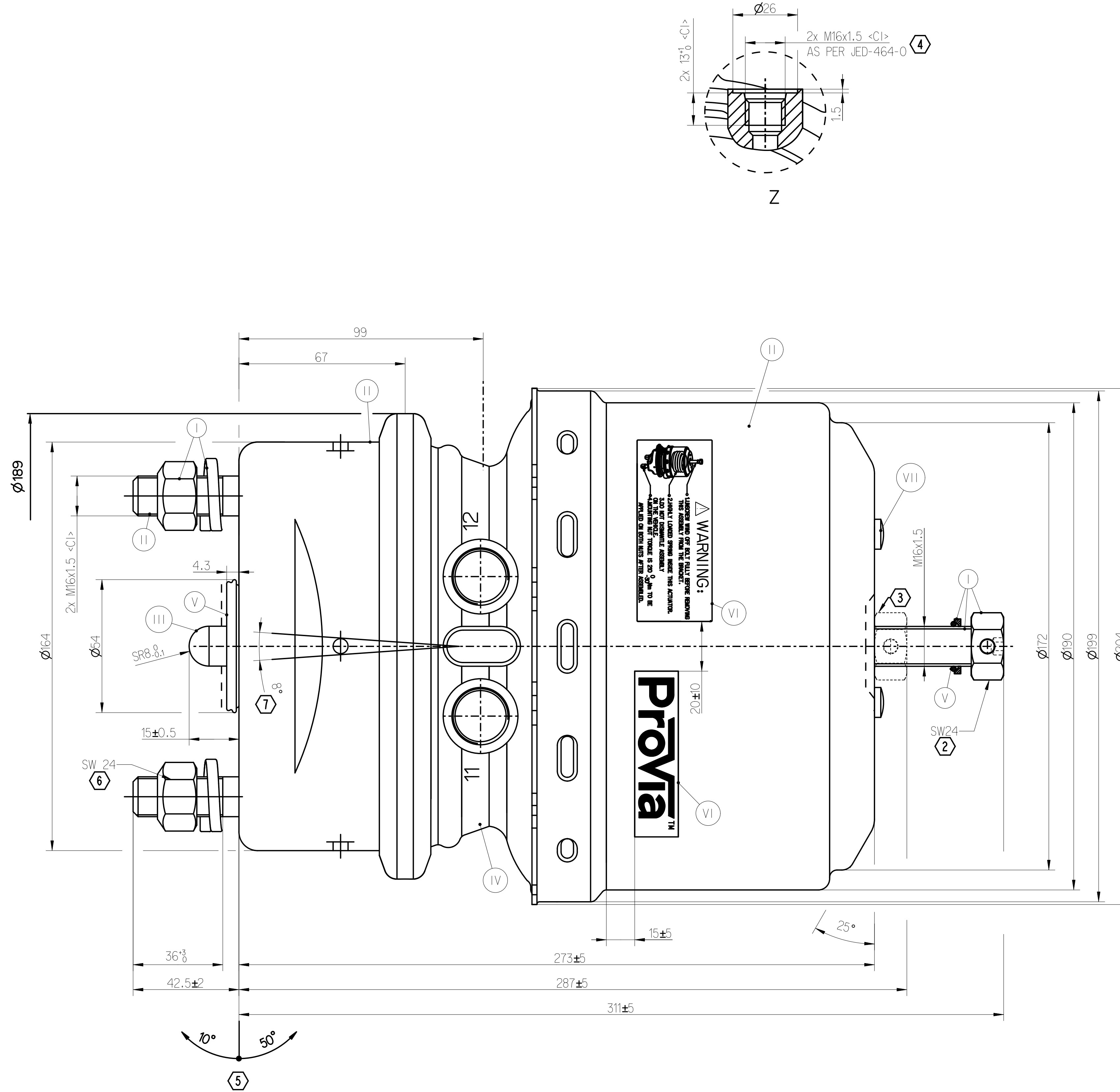
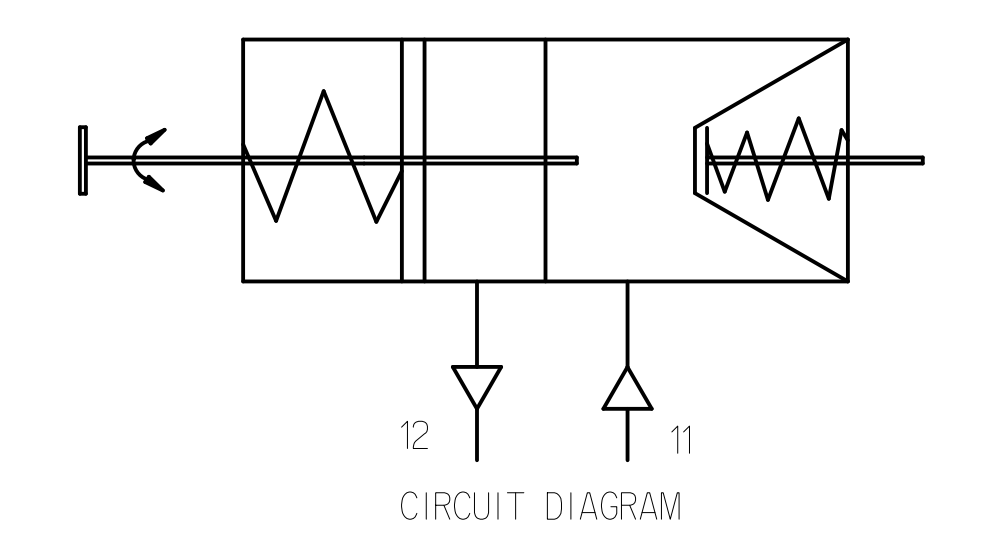
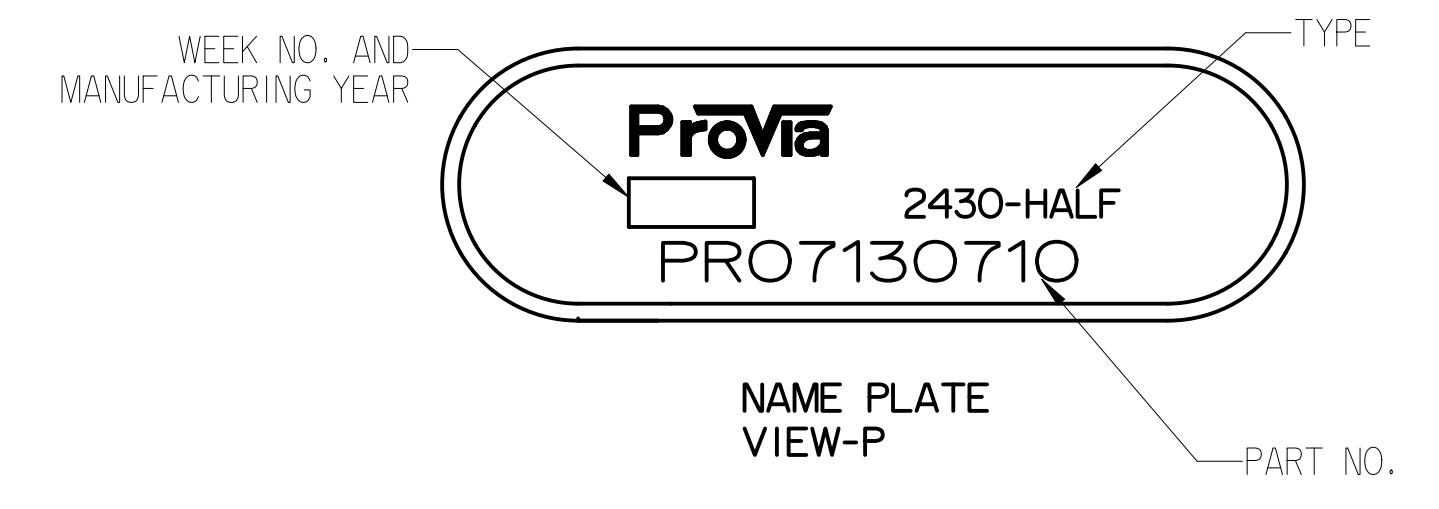
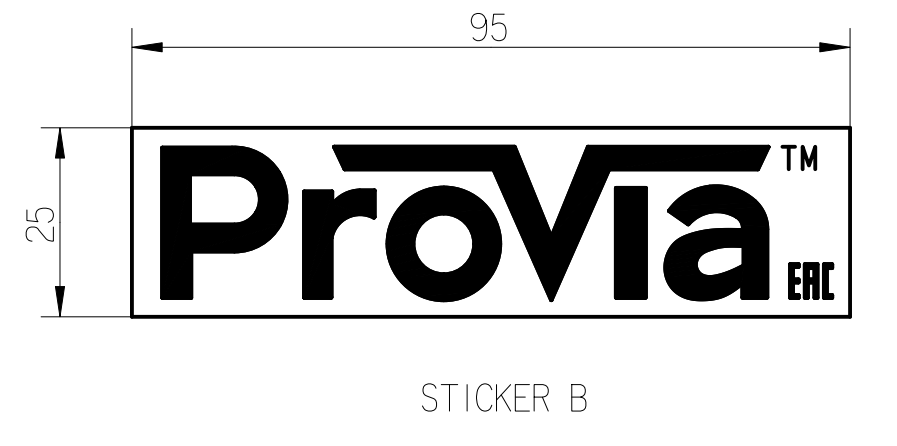
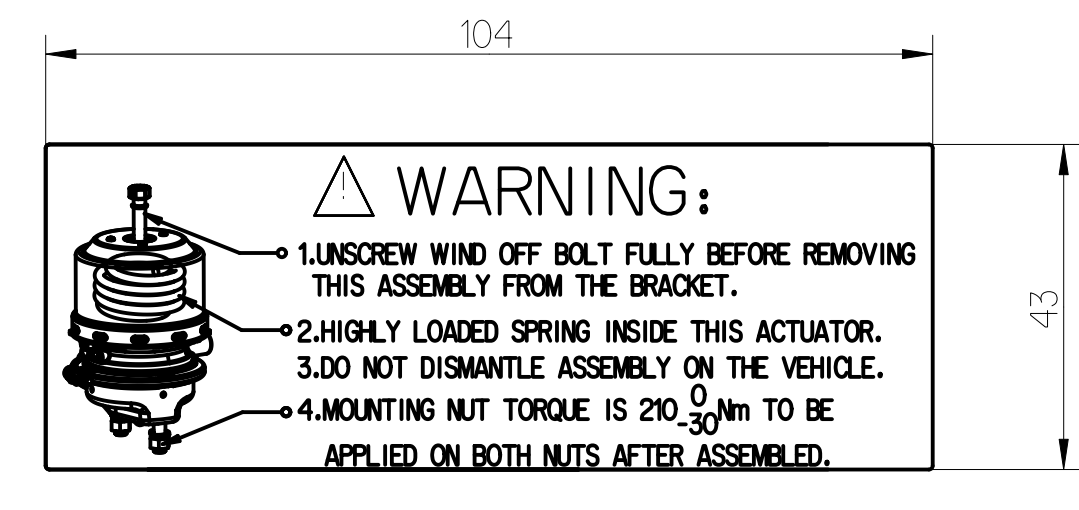


SURFACE PROTECTION	
I	ZINC PLATED WITH CR6+ FREE
II	ELECTRO-PAINTING
III	DACROMET
IV	SURFACE OXIDIZATION
V	RUBBER
VI	STICKERS
VII	BLACKENING

SAFETY CHARACTERISTICS	0
SIGNIFICANT CHARACTERISTICS	0
CUSTOMER INTERFACE	6



- ① TORQUE: ≥35Nm
- ② RELEASE POSITION, RELEASING WITH: 80Nm MAX.
- ③ DRIVING POSITION, TIGHTENING WITH: 25₃₀Nm
- ④ TORQUE: MAX.34Nm
- ⑤ ADMISSIBLE INSTALLATION POSITION
- ⑥ TORQUE: 210₃₀Nm
- ⑦ DEFLECTION: 8° MAX AT STROKE:0 mm
- ⑧ TO BE INSTALLED WITH LOWER BREATHER HOLE OPEN



- TECHNICAL REQUIREMENT:
1. STROKE: SERVICE BRAKE: ≥65mm; SPRING BRAKE: ≥65mm;
 2. WORKING PRESSURE: SERVICE CHAMBER: Pmax 10,2 bar, TEMPORARILY 13 bar; PARKING CHAMBER: Pmax 8,5 bar, TEMPORARILY 11 bar.
 3. WORKING TEMPERATURE: -40°C...+80°C; (-40°F...+176°F)
 4. THE DRAWING IS AT CAGED CONDITION, THE PARKING CHAMBER WILL BE AT UNCAGED CONDITION DURING SHIPMENT.
 5. WORKING MEDIUM: AIR.

General Specification: ISO 8763, JED-354-1, Size ISO 14400 LP		Copyright ©*		ProVia	
Further Technical Data: PRO 713 OBD O	Doc. Code: 0350	Sheet: 1	To: 6	TRISTOP - BRAKE ACTUATOR 24/30	
File: 8.0.3	8.0.0	8.1.5	8.2	005	EN
Course: 14	8.2	8.3.5	8.5	8.6.5	1/1
Tapped holes acc. JED-464		Tapped holes acc. JED-464		Tapped holes acc. JED-464	
Tolerance class: Approx. Chromomach		Tolerance class: Approx. Chromomach		Tolerance class: Approx. Chromomach	
A 0		CSFO		EN 17261	

This document is the property of ProVia. It is intended for internal use only. It is not to be distributed outside the company. It is not to be used for any other purpose. It is not to be copied, reproduced, or transmitted in any form or by any means, electronic, mechanical, or otherwise, without the prior written permission of ProVia. ProVia reserves all rights in this document.