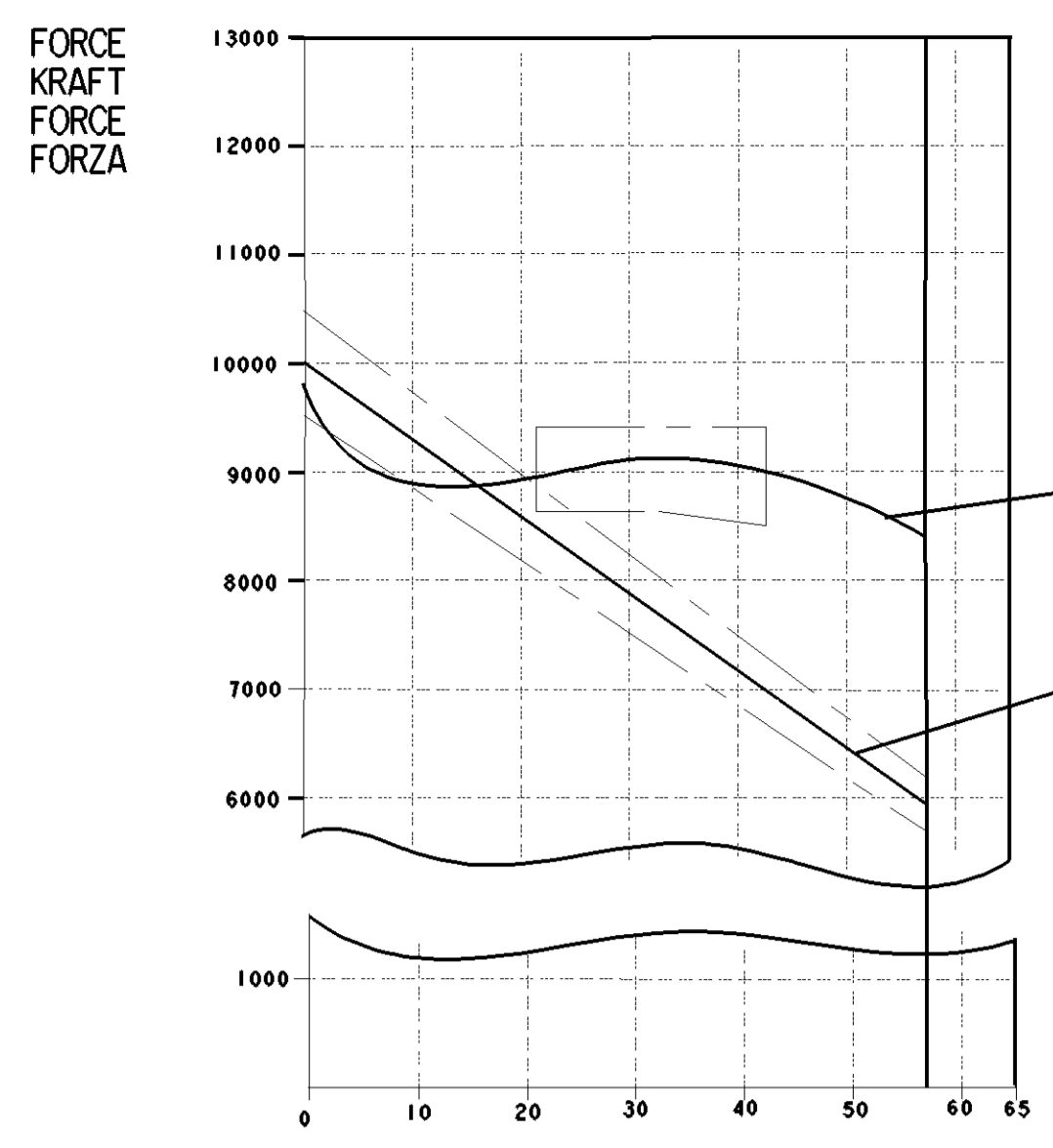


| SURFACE PROTECT. OBERFL. SCHUTZ |                              |
|---------------------------------|------------------------------|
| I                               | POWDER COATING JED-240-7     |
| II                              | Zn JED-256-5                 |
| III                             | PHOSPHATING & OILING JED-371 |
| IV                              | AL JED-259                   |
| V                               | RUBBER / PLASTIC             |
| VI                              | BRASS                        |
| VII                             | AL JED-007-1                 |

TECHNICAL DATA  
TECHNISCHE DATEN



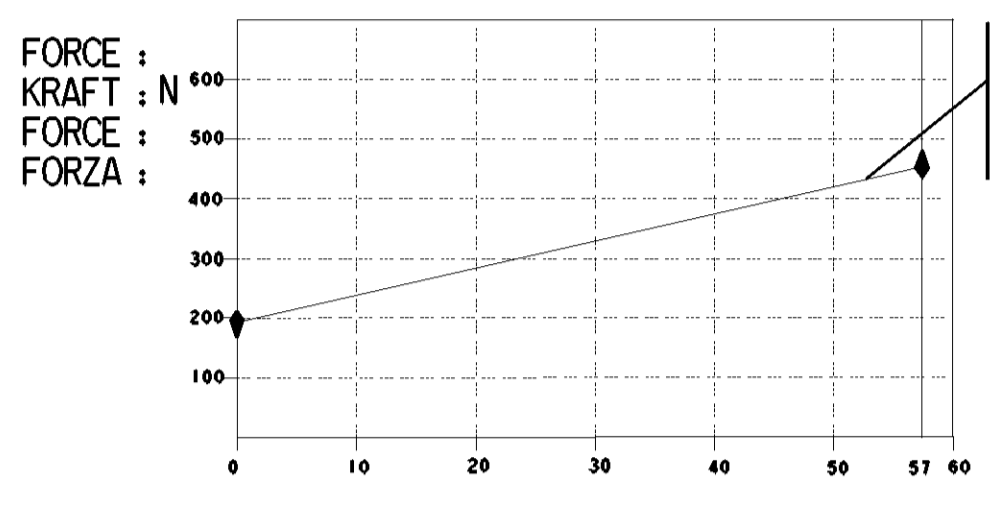
AIR VOLUME OF SERVICE BRAKE PART AT 2/3 OF ITS STROKE  
HUBVOLUMEN DES BETRIEBSBREMSTEILES BEI 2/3 HUB  
VOLUME D'AIR DU DISPOSITIF DU FREIN DE SERVICE A 2/3 DE LA COURSE  
VOLUME D'ARIA DELLA SEZIONE DI FRENO DI SERVIZIO A 2/3 DELLA CORSA : ca. 0.70x10<sup>3</sup> cm<sup>3</sup>

AIR VOLUME OF SPRING BRAKE PART  
HUBVOLUMEN DES FEDERSPEICHERS  
VOLUME D'AIR DU DISPOSITIF RESSORT  
VOLUME D'ARIA DELLA SEZIONE A MOLLA : ca. 1.40x10<sup>3</sup> cm<sup>3</sup>

OUTPUT FORCE OF SERVICE BRAKE PART AT  
KRAFTABGABE DES BETRIEBSBREMSTEILES BEI  
EFFORT DE POUSSEE DU DISPOSITIF DU FREIN DE SERVICE SOUS  
FORZA DI SPINTA DELLA SEZIONE DI FRENO DI SERVIZIO PER : 6.5 bar

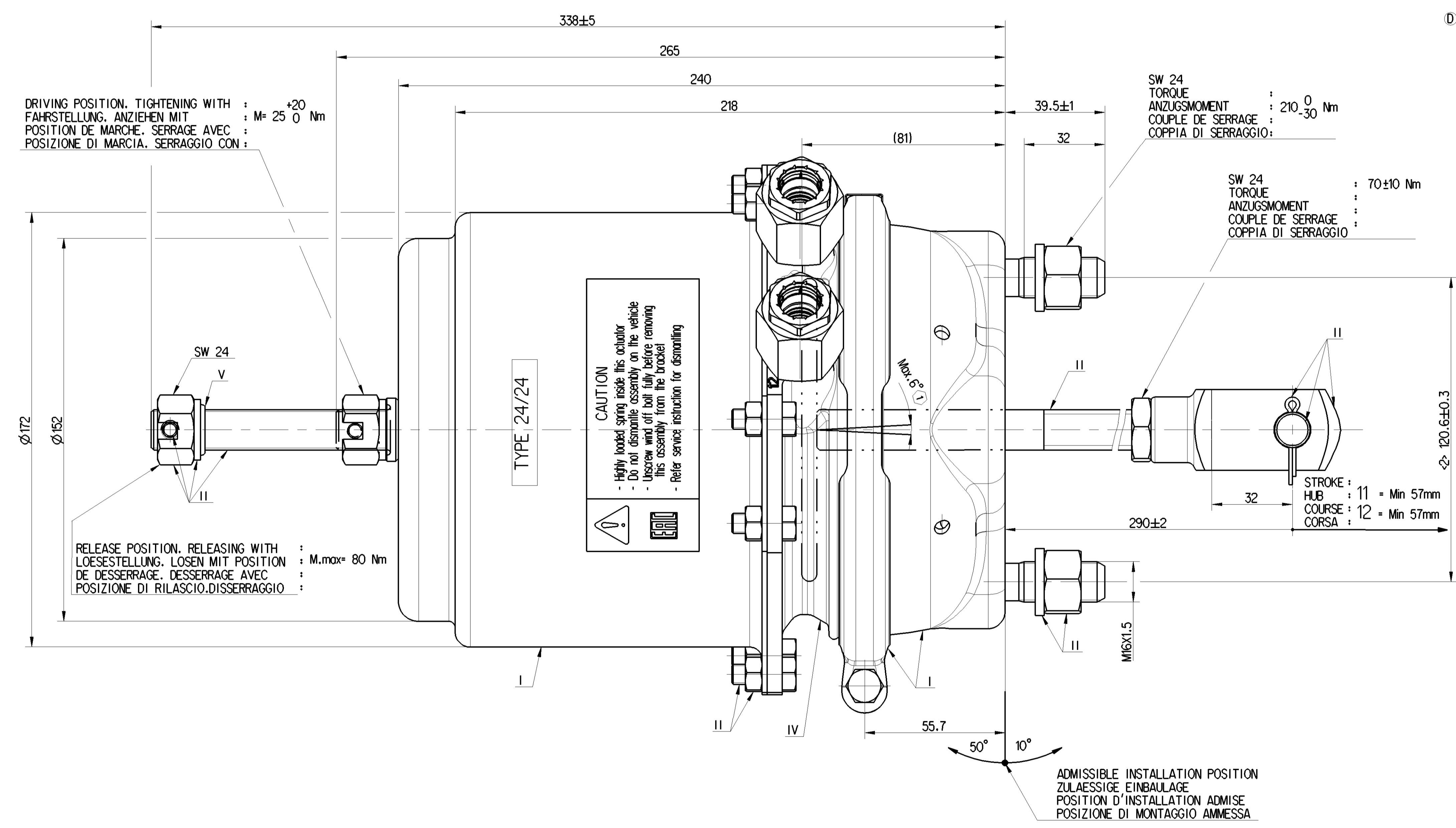
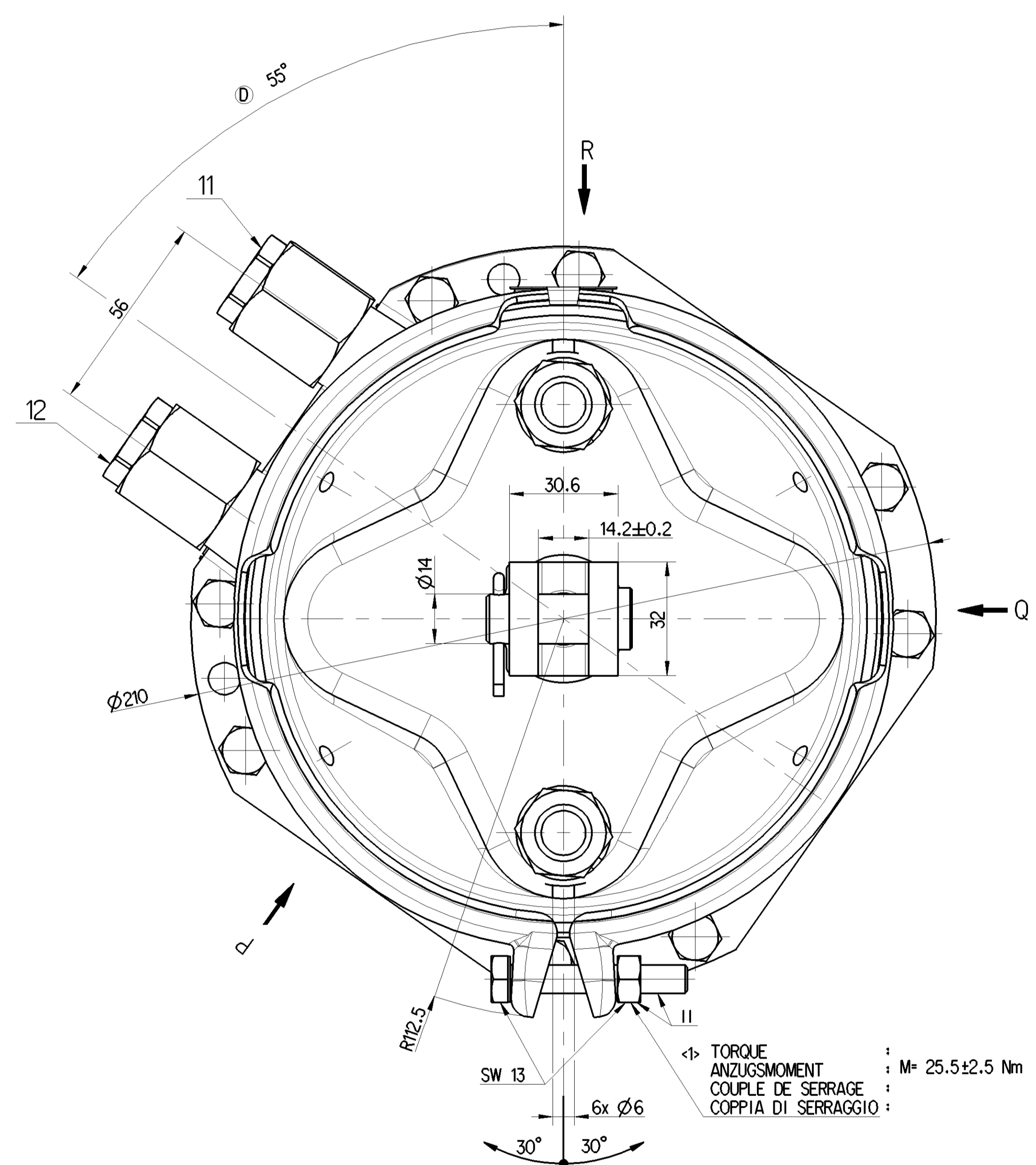
OUTPUT FORCE OF SPRING BRAKE PART, RELEASE PRESSURE  
KRAFTABGABE DES FEDERSPEICHERS, LOESEDRUCK  
EFFORT DE PUSSEE DU DISPOSITIF RESSORT, PRESSION DE DESSERRAGE  
FORZA DI SPINTA DELLA SEZIONE A MOLLA, PRESSIONE DI RILASCIO : 4.9±0.4 bar

NOMINAL VALUES GIVEN FOR SERVICE SIDE, TOLERANCE BAND AS PER DIN 74060-1  
NOMINAL VALUES GIVEN FOR SPRING SIDE, TOLERANCE BAND ±5%



FORCE OF RETURN SPRING OF SERVICE BRAKE PART  
RUECKSTELLFEDERKRAFT DES BETRIEBSBREMSTEILES  
EFFORT DU RESSORT DE RAPPEL DU DISPOSITIF DU FREIN DE SERVICE  
FORZA DELLA MOLLA DI RITORNO DELLA SEZIONE DI FRENO DI SERVIZIO

STROKE : mm  
HUB : mm  
COURSE : mm  
CORSIA : mm

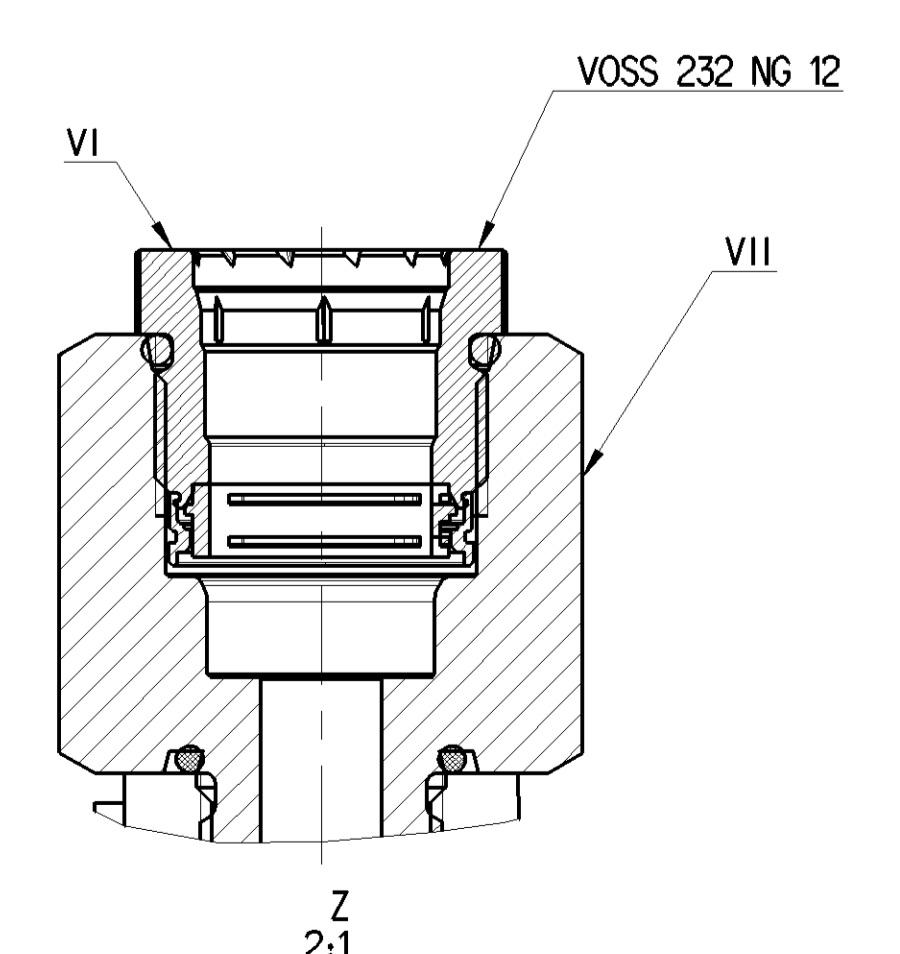
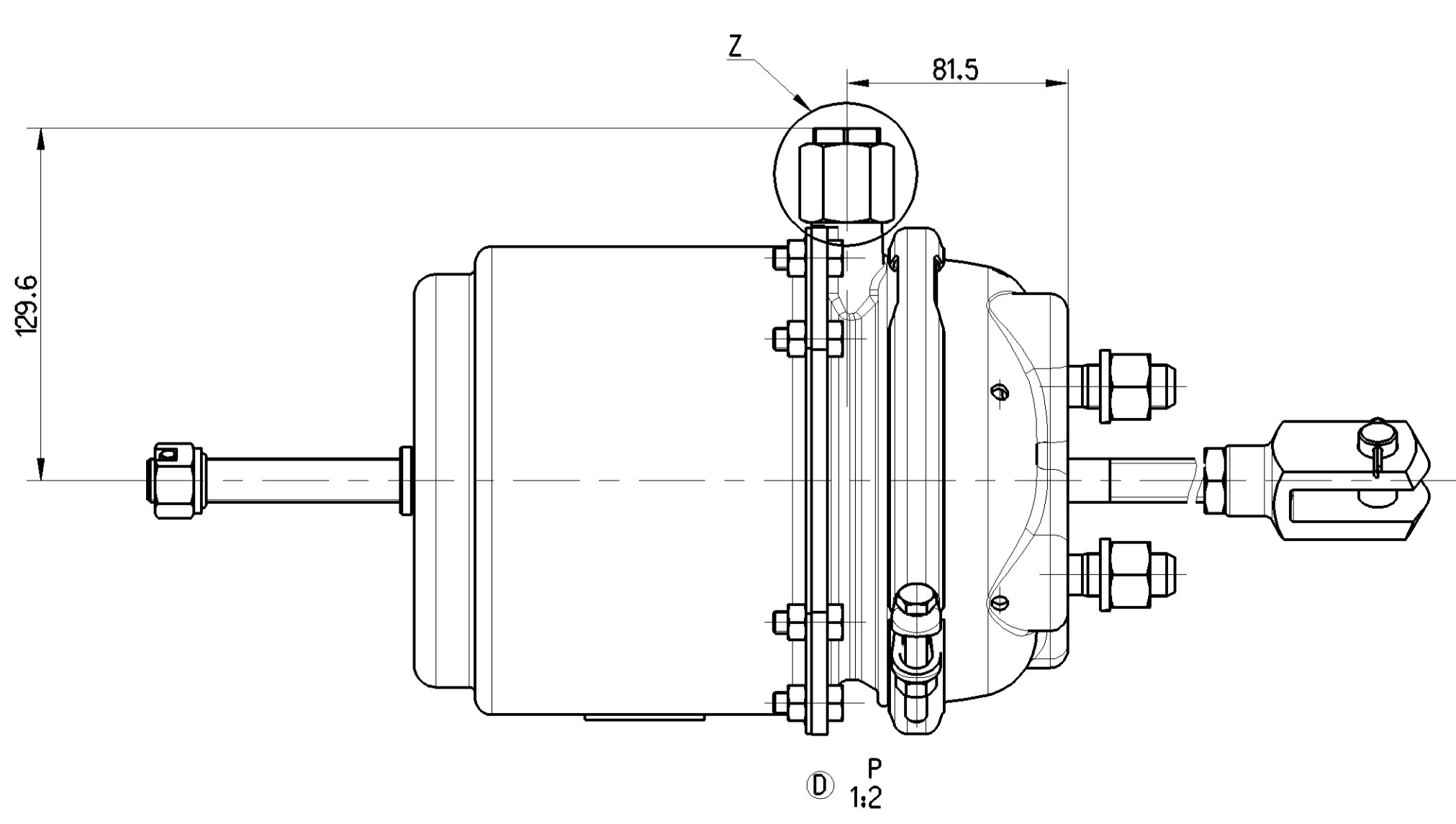


DRIVING POSITION, TIGHTENING WITH : M<sup>+</sup> 25 ± 20 Nm  
FAHRSTELLUNG, ANZIEHEN MIT : M<sup>+</sup> 25 ± 20 Nm  
POSITION DE MARCHÉ, SERRAGE AVEC : M<sup>+</sup> 25 ± 20 Nm  
POSIZIONE DI MARCIA, SERRAGGIO CON : M<sup>+</sup> 25 ± 20 Nm

RELEASE POSITION, RELEASING WITH : M<sup>-</sup> max 80 Nm  
LOESESTELLUNG, LOSEN MIT POSITION : M<sup>-</sup> max 80 Nm  
DE DESSERRAGE, DESSERRAGE AVEC : M<sup>-</sup> max 80 Nm  
POSIZIONE DI RILASCIO, DISSERRAGGIO : M<sup>-</sup> max 80 Nm

TORQUE : M<sup>+</sup> 25.5±2.5 Nm  
ANZUESSMOMENT : M<sup>+</sup> 25.5±2.5 Nm  
COUPLE DE SERRAGE : M<sup>+</sup> 25.5±2.5 Nm  
COPPIA DI SERRAGGIO : M<sup>+</sup> 25.5±2.5 Nm

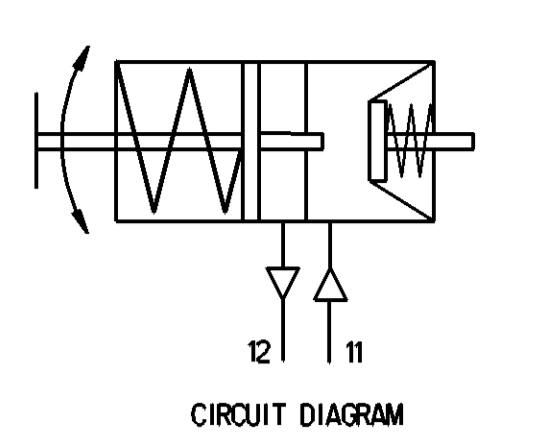
TO BE INSTALLED WITH LOWER BREATHER HOLE OPEN  
IM EINBAUZUSTAND UNTERE ATMUNGSBOHRUNG GEOEFFNET  
A MONTER AVEC LE RENIFLARD INFERIEUR OUVERT  
INSTALLAZIONE, CON IL FORO DI SFILATO INFERIORE APERTO



MANUFACTURING PLANT:  
PRODUKT IONSTAETTE: JED - 225  
LIEU DE FABRICATION:  
LUOGO DI FABBRICAZIONE:

WEEK / YEAR OF MANUFACTURE  
FERTIGUNGSWOCHE/JAHR  
SEMAINE/ANNEE DE FABRICATION  
SETTIMANA/ANNO DELLA FABBRICAZIONE

ProVia IDENTIFICATION NUMBER  
ProVia TEILE NUMBER  
NUMERO D' IDENTIFICATION ProVia  
NUMERO D' IDENTIFICAZIONE



|   |  |  |
|---|--|--|
| MEDIUM : AIR<br>MEDIUM : LUFT<br>FLUIDE : AIR<br>FLUIDO : ARIA  |  |  |
| NOMINAL DIAMETER :<br>NENNWEITE : MIN Ø8.5<br>DIAMETRE NOMINAL :<br>DIAMETRO NOMINALE :   |  |  |
| WIDTH ACROSS FLATS<br>SCHLUSSELWEITE<br>SURPLATS<br>LARGHEZZA IN CHIAVE   |  |  |
| THERMAL RANGE OF APPLICATION :<br>THERMISCHER ANWENDUNGSBEREICH : -40°C...+80°C<br>GAMME D'APPLICATION THERMIQUE :<br>CAMPO TERMICO D'APPLICAZIONE :  |  |  |
| PORT : SERVICE BRAKING SYSTEM, WORKING PRESSURE : Pe max. = 10 bar<br>ANSCHLUSS : 11 BETRIEBSBREMSEANLAGE, BETRIEBSDRUCK : Pe max. = 10 bar<br>ORIFICE : DISPOSITIF DE FREINAGE DE SERVICE, PRESSION D'UTILISATION :<br>ORIFIZIO : DISPOSITIVO DI FRENATURA DI SERVIZIO, PRESSIONE DI ESERCIZIO : |  |  |
| (TEMPORARILY<br>KURZZEITIG<br>DE COURTE DUREE<br>BREVE TEMPO SOLO : Pe max. = 13 bar)   |  |  |
| PORT : SPRING BRAKE CYLINDER, WORKING PRESSURE : Pe max. = 8.5 bar<br>ANSCHLUSS : 12 FEDERSPEICHERZYLINDER, BETRIEBSDRUCK : Pe max. = 8.5 bar<br>ORIFICE : CYLINDRE A RESSORT, PRESSION D'UTILISATION :<br>ORIFIZIO : CILINDRO A MOLLA, PRESSIONE DI ESERCIZIO :                                  |  |  |
| (TEMPORARILY<br>KURZZEITIG<br>DE COURTE DUREE<br>BREVE TEMPO SOLO : Pe max. = 11 bar)   |  |  |
| DEFLECTION : max. 6° AT STROKE<br>AUSLENKUNG : max. 6° BEI HUB<br>DEFLEXION : A COURSE<br>DEVIATION : A CORSA   |  |  |
| OPEN BREATHER HOLE<br>OFFEN ATMUNGSBOHRUNG<br>OUVERT TROU RENIFLEUR<br>APERTO FORO RESPIRATORE  |  |  |
| DELIVERY<br>ANLIEFERUNG<br>LIVRAISON<br>FORNITURA   | <input checked="" type="checkbox"/> RELEASE POSITION<br>LOESESTELLUNG<br>POSITION DE DESSERRAGE<br>POSIZIONE DI RILASCIO | <input type="checkbox"/> DRIVING POSITION<br>FAHRSTELLUNG<br>POSITION DE MARCHÉ<br>POSIZIONE DI MARCIA |
| UNIT DRAWN WITH AIR APPLIED AT PORT 12<br>EINHEIT MIT LUFT APPLIED AT PORT GEZEICHNET 12<br>UNIDADE DESENHADA COM AIR APLICADA NA PORTA 12<br>UNITA DISEGNATA CON ARIA APPLICATO A PORTA 12   |  |  |

SAFETY CHARACTERISTICS  
SICHERHEITSMERKMALE  
CARACTÉRISTIQUES DE SÉCURITÉ  
CARATTERISTICHE DI SICUREZZA

SIGNIFICANT CHARACTERISTICS  
WESSENTLICHE MERKMALE  
CARACTÉRISTIQUES SIGNIFIANTES  
CARATTERISTICHE SIGNIFICATIVE

|  |                |               |
|--|----------------|---------------|
| General Specifications: JED-554-1, Size ISO 14402 LP | Design: 491003 | ProVia        |
| Further Technical Data: PRO 491 003 0                | Doc. Code: 035 | 2017-10-12    |
| Class: 0   | Stroke: 11     | PRO 491 003 0 |
| Medium: Steel  | Course: 11     | 005 ML 1/1    |
| Tap: 10.570  | 11             | 174088        |
| Course: 2.0  | 3.5            | 5.0           |
| 6.5  |                |               |